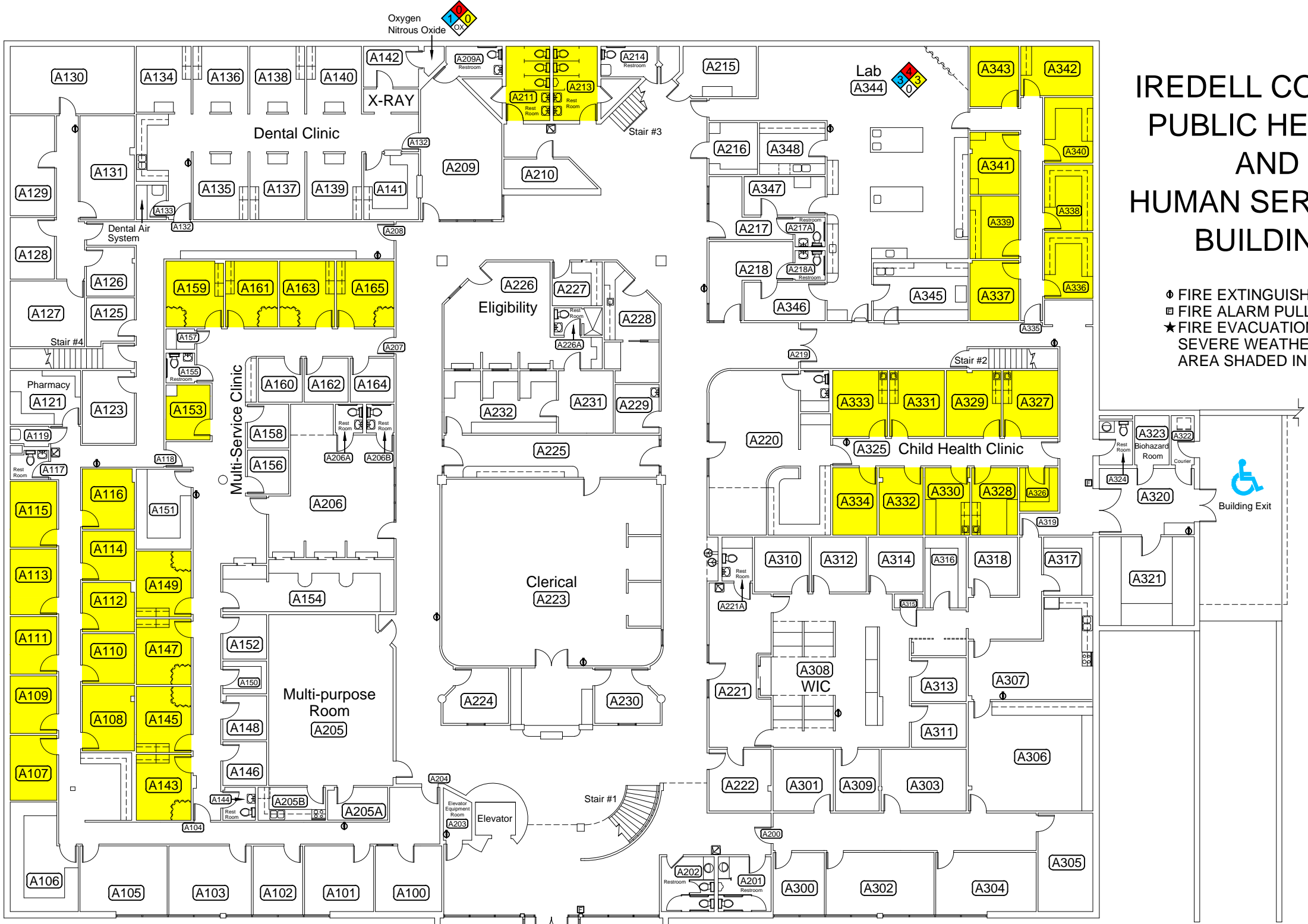


# IREDELL COUNTY PUBLIC HEALTH AND HUMAN SERVICES BUILDING

- ◆ FIRE EXTINGUISHER
- FIRE ALARM PULL STATION
- ★ FIRE EVACUATION PLAN
- SEVERE WEATHER SAFE
- AREA SHADED IN YELLOW



LEVEL A - FIRST FLOOR

DATE: \_\_\_\_\_



